

TARRAWONGA COAL MINE – MONTHLY MONITORING SUMMARY

Site Information

EPL No: 12365

EPA Website Link: <http://www.epa.nsw.gov.au/prpoeoapp/ViewPOEOLicence.aspx?DOCID=55113&SYSUID=1&LICID=12365>

Licensee: Tarrawonga Coal Pty Ltd

Licensee Address: Tarrawonga Coal Mine, 469 Goonbri Road, BOGGABRI NSW 2382

EPL Monitoring Points: See Figure 1 below

Sampling Period: August 2024

Obtained Date: 9/09/2024

Publication Date: 15/09/2024

Table 1 - No Pollutant Limits Apply

EPL ID	Pollutant	Units of Measure	Monitoring Frequency	No. of Samples for the Month	Date Sampled	Date of Max. Value Obtained	Min Value	Mean Value	Median Value	Max or Only Value	Comments
5	TSS	mg/L	Upon discharge	-	-	-	-	-	-		BCU not flowing, sampled at GCU as an indicator of upstream levels.
	Conductivity	µS/cm		-	-	-	-	-	-		
	Oil & Grease	mg/L		-	-	-	-	-	-		
	pH	pH		-	-	-	-	-	-		
6	TSS	mg/L	Upon discharge	1	06/08/2024	06/08/2024	-	-	-	32	-
	Conductivity	µS/cm		1	06/08/2024	06/08/2024	-	-	-	83	
	Oil & Grease	mg/L		1	06/08/2024	06/08/2024	-	-	-	<5	
	pH	pH		1	06/08/2024	06/08/2024	-	-	-	7.02	

Table 2 - Pollutant Limits Apply

EPL ID	Pollutant	Units of Measure	Monitoring Frequency	No. of Samples for the Month	Date Sampled	Date of Max. Value Obtained	Min Value	Max or Only Value	100%ile Limit	Exceed-ance (Yes/No)	Comment/s
1	TSS	mg/L	Upon discharge	-	-	-	-	-	-	-	-
	Conductivity	µS/cm		-	-	-	-	-	-	-	
	Oil & Grease	mg/L		-	-	-	-	-	-	-	
	pH	pH		-	-	-	-	-	-	-	
2	TSS	mg/L	Upon discharge	1	06/08/2024	06/08/2024	-	229	50	No	Sample taken after major rain event, therefore limit for TSS does not apply.
	Conductivity	µS/cm		1	06/08/2024	06/08/2024	-	284	-	No	
	Oil & Grease	mg/L		1	06/08/2024	06/08/2024	-	<5	10	No	
	pH	pH		1	06/08/2024	06/08/2024	-	7.68	6.5-8.5	No	
3	TSS	mg/L	Upon discharge	-	-	-	-	-	-	-	-
	Conductivity	µS/cm		-	-	-	-	-	-	-	
	Oil & Grease	mg/L		-	-	-	-	-	-	-	
	pH	pH		-	-	-	-	-	-	-	
24	TSS	mg/L	Upon discharge	-	-	-	-	-	-	-	-
	Conductivity	µS/cm		-	-	-	-	-	-	-	
	Oil & Grease	mg/L		-	-	-	-	-	-	-	

EPL ID	Pollutant	Units of Measure	Monitoring Frequency	No. of Samples for the Month	Date Sampled	Date of Max. Value Obtained	Min Value	Max or Only Value	100%ile Limit	Exceed-ance (Yes/ No)	Comment/s
	pH	pH		-	-	-	-	-	-	-	
26	TSS	mg/L	Upon discharge	-	-	-	-	-	-	-	-
	Conductivity	µS/cm		-	-	-	-	-	-	-	
	Oil & Grease	mg/L		-	-	-	-	-	-	-	
	pH	pH		-	-	-	-	-	-	-	
27	TSS	mg/L	Upon discharge	1	06/08/2024	06/08/2024	-	1,100	50	No	Sample taken after major rain event, therefor limit for TSS does not apply.
	Conductivity	µS/cm		1	06/08/2024	06/08/2024	-	299	-	No	
	Oil & Grease	mg/L		1	06/08/2024	06/08/2024	-	<5	10	No	
	pH	pH		1	06/08/2024	06/08/2024	-	7.42	6.5-8.5	No	

Table 3 – Monitoring (Quarterly & 6 Monthly – No Limits apply)

EPL ID	Pollutant	Units of Measure	Monitoring Frequency	No. of Samples for the Period	Date Sampled	Date of Max. Value Obtained	Min Value	Mean Value	Median Value	Max or Only Value
9	Conductivity	µS/cm	6 monthly – (Mar- Sep)	-	-	-	-	-	-	-
	Lead	mg/L		-	-	-	-	-	-	
	pH	pH		-	-	-	-	-	-	
	Standing Water Level	metres		-	-	-	-	-	-	
10	Conductivity	µS/cm	6 monthly – (Mar- Sep)	-	-	-	-	-	-	-
	Lead	mg/L		-	-	-	-	-	-	
	pH	pH		-	-	-	-	-	-	
	Standing Water Level	metres		-	-	-	-	-	-	
12	Conductivity	µS/cm	6 monthly – (Mar- Sep)	-	-	-	-	-	-	-
	Lead	mg/L		-	-	-	-	-	-	
	pH	pH		-	-	-	-	-	-	
	Standing Water Level	metres		-	-	-	-	-	-	
13	Conductivity	µS/cm	Quarterly - (Feb, May, Aug, Nov)	1	07/08/2024	07/08/2024	-	-	-	432
	Oil & Grease	mg/L		1	07/08/2024	07/08/2024	-	-	-	<5
	pH	pH		1	07/08/2024	07/08/2024	-	-	-	8.7
	TSS	mg/L		1	07/08/2024	07/08/2024	-	-	-	1,520

Table 4 – Quarterly Attended Noise Monitoring

(Noise Limits Apply -35dB LAeq(15min) -Day, Evening and Night;45dB LA1(1min) -Night)

Table 5 – Monthly Monitoring (Blasts – Limits Apply)

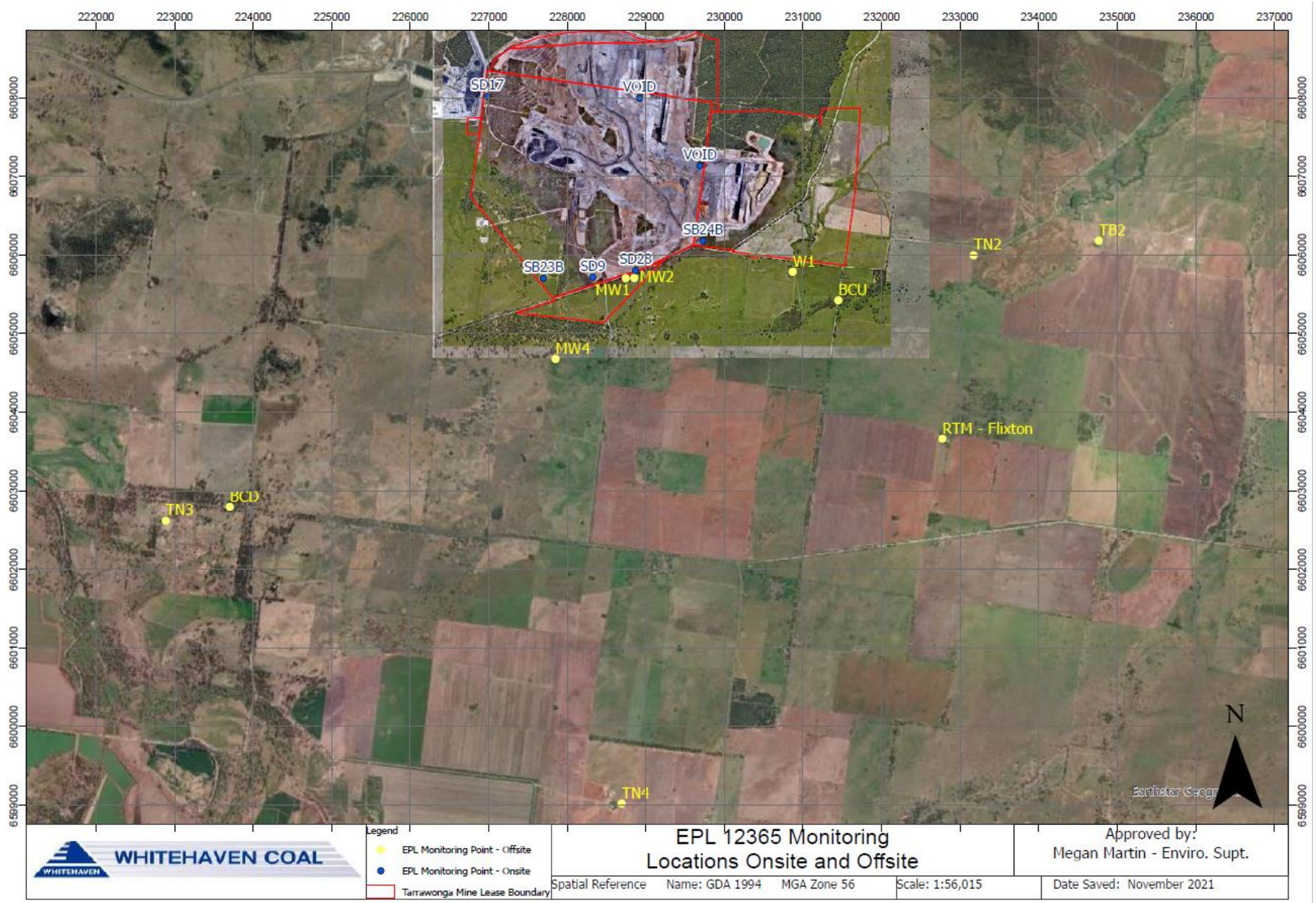
Location	Parameter	Units of Measure	Frequency	No. of Blasts for the Month	Average Value	Max Value	100%ile Limit	(Potential) Non-compliance /breach	Date of Max. Value Obtained
Coomalgah	Blast Noise	dB (Lin Peak)	Every Blast	7	96.14	106.3	120	Nil	21/08/2024
(TB2)	Blast Vibration	mm/s	Every Blast	7	105.48	0.31	10	Nil	21/08/2024

Table 6- Monthly Monitoring (Dust PM10 – No Limits apply)

Location	No. of samples required by licence	Lowest sample value	Mean of sample	Highest sample value
“Flixton” property* TEOM (µg/m ³)	Continuous	5.13	18.6	34.7

**Mine owned property – no limit apply*

Figure 1 – EPL 12365 Monitoring Locations



Legend	
●	EPL Monitoring Point - Offsite
●	EPL Monitoring Point - Onsite
	Tarrawonga Mine Lease Boundary

EPL 12365 Monitoring Locations Onsite and Offsite			
Spatial Reference	Name: GDA 1994	MGA Zone 56	Scale: 1:56,015

Approved by: Megan Martin - Enviro. Supt.
Date Saved: November 2021